

Transferpette® single & multichannel pipettes

BRAND Transferpette® pipettes are lightweight, reliable tools designed for use in research and routine laboratory applications.

Ease Liquid-Handling Tasks: Every function has a dedicated control to simplify operation as well as limit inadvertent tip ejection or volume adjustment.

Secure, Comfortable Tip Ejector

Tip ejector is mounted high, next to the pipetting key to limit unintended tip ejection.

The thumb sweeps comfortably sideways from the pipetting key, allowing you to deliver the needed force with the minimum of strain.

Ergonomic Design

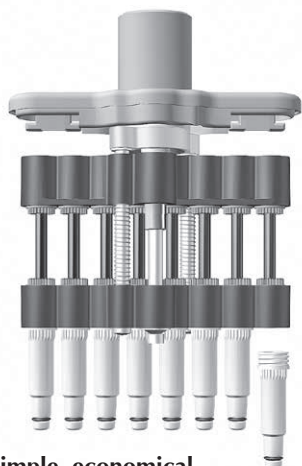
The side-mounted pipetting key reduces hand fatigue, especially during serial pipetting applications. The unique hook-shaped handle lets the light-weight pipette suspend freely from the operator's hand.

Easy-To-Read Settings



Simple Operation

The volume adjustment knob turns easily without snagging gloves.



Simple, economical, in-lab service

All Transferpette® eight- and twelve-channel pipettes feature patented individually removable tip cones for easy cleaning and seal replacement. This is especially handy if faults are discovered during calibration, as only the individual channel needs service.

All Transferpette® single channel pipettes can be disassembled for cleaning and reassembled in seconds without tools. Integrated spring/seal construction simplifies in-lab service.



Transferpette® single and multichannel pipettes

SUB-MICRO PIPETTES

The Transferpette® S and Transferpette® 0.1-1µL can pipette small volumes with unparalleled accuracy and precision. The pipette, when used with BRAND nano-cap™ tips, drastically reduces the column of air between the piston and sample. The ultra-thin bore and walls allow visual confirmation of sample volume and precise placement into vials.



Transferpette® Adjustable Volume Single Channel Pipettes — ship with operating manual, performance certificate, & three-year warranty.

Capacity, µL**	A* < ±		CV* ≤		Subdivision, µL	Cat. No.	2014 List Price
	%	µL	%	µL			
0.1-1	2	0.02	1.2	0.012	0.005	704101	\$342.00
0.5-10	1	0.1	0.8	0.08	0.05	704102	311.00
2-20	0.8	0.16	0.4	0.08	0.1	704103	311.00
2-20	0.8	0.16	0.4	0.08	0.1	704104	311.00
5-50	0.8	0.4	0.4	0.2	0.1	704172	311.00
10-100	0.6	0.6	0.2	0.2	0.1	704174	311.00
20-200	0.6	1.2	0.2	0.4	1	704178	311.00
100-1000	0.6	6	0.2	2	1	704180	311.00
500-5000 (0.5-5mL)	0.6	30	0.2	10	10	704182	311.00

Transferpette®-8 Eight Channel Pipettes — ship with pipette stand, reagent reservoir, two tip boxes, spare V-rings, performance certificate, & one-year warranty.

0.5-10	1.6	0.16	1.0	0.1	0.05	703600	724.00
2-20	1.0	0.2	0.6	0.12	0.1	703602	724.00
2.5-25	1.0	0.25	0.6	0.15	0.1	703604	724.00
5-50	0.8	0.4	0.4	0.2	0.1	703606	724.00
10-100	0.8	0.8	0.3	0.3	0.1	703608	724.00
20-200	0.8	1.6	0.3	0.6	1	703610	724.00
30-300	0.6	1.8	0.3	0.9	1	703612	724.00

Transferpette®-12 Twelve Channel Pipettes — ship with pipette stand, reagent reservoir, two tip boxes, spare V-rings, performance certificate, & one-year warranty.

0.5-10	1.6	0.16	1.0	0.1	0.05	703620	893.00
2-20	1.0	0.2	0.6	0.12	0.1	703622	893.00
2.5-25	1.0	0.25	0.6	0.15	0.1	703624	893.00
5-50	0.8	0.4	0.4	0.2	0.1	703626	893.00
10-100	0.8	0.8	0.3	0.3	0.1	703628	893.00
20-200	0.8	1.6	0.3	0.6	1	703630	893.00
30-300	0.6	1.8	0.3	0.9	1	703632	893.00

Accessories

Benchtup Pipette Stand - for up to six single channel pipettes, pack of 1	703208	190.00
Wall-Mounted Pipette Rack - for up to three single channel pipettes, pack of 1	703210	80.00
Stand for Transferpette®-8/-12 multichannel pipettes - holds one pipette, pack of 1	703440	38.00
V-ring/O-ring (green) for Transferpette®-8/-12 ultra-micro tip cones (0.5-10µL, 2-20µL), pack of 24	703380	28.60
V-ring/O-ring (black) for Transferpette®-8/-12 tip cones - all other sizes, pack of 24	703491	30.60

A*=Accuracy, CV*=Coefficient of Variation

* The value of accuracy and coefficient of variation are final test values referring to the delivered nominal volume, instrument and distilled water at equilibrium with ambient temperature (20°C/68°F) and with smooth operation.

** Tip selection chart see page 24